



Gel Product Brochure



Tel: 020 8050 4671



info@csmedical.co.uk



www.csmedical.co.uk

Gel Supports

Gels to support the whole body

Proper support for the patient during surgery is essential to avoid pressure related and neurological injury.

CS Medical waterproof gel supports are soft, flexible and easy to clean. They have been degassed to increase their strength and their resistance to tearing. All CS Medical gel

supports contain silicone fluid to evenly distribute the patient's body weight. For some products there is an option to choose supports with a foam core. This makes them lighter in weight and easier for staff to handle than traditional gel supports.



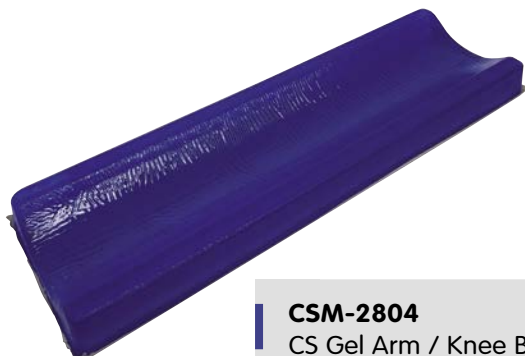
CSM-2800

CS Prone Gel Support with Foam Core
280mm x 240mm x 140mm



CSM-2809

CS Gel Dome Support with Foam Core
(100mm high) 410mm x 100mm x 100mm



CSM-2804

CS Gel Arm / Knee Board (1 Unit)
500mm x 150mm x 40mm



CSM-2802

CS Prone Gel Chest Support
630mm x 460mm x 150mm

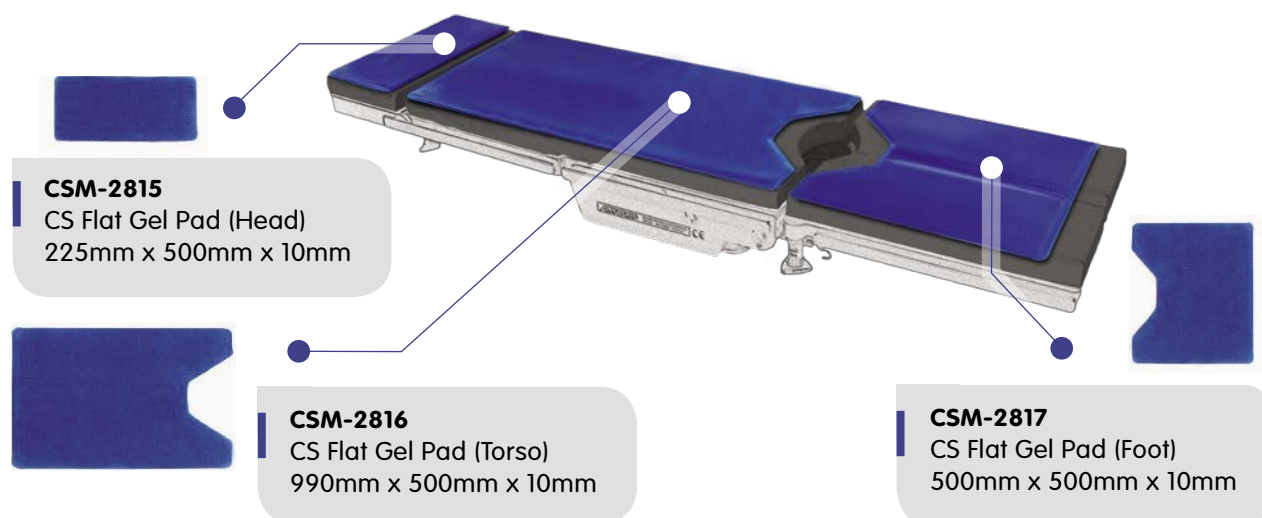


Gel Supports



3-Piece Operating Table Pad

These pads are designed for use on segmented tables which consist of a head, torso and foot section. It is ideal for perineal cutout tables. Can also be used as a full length table pad.



	Code	Description	Size
	CSM-2800	CS Prone Gel Head Support with Foam Core	280mm x 240mm x 140mm
	CSM-2801	CS Prone Gel Low Head Support	220mm x 220mm x 120mm
	CSM-2802	CS Prone Gel Chest Support	630mm x 460mm x 150mm
	CSM-2803	CS Flat Gel Pad (Pair)	600mm x 160mm x 10mm
	CSM-2804	CS Gel Arm / Knee Board (1 Unit)	500mm x 150mm x 40mm
	CSM-2806 CSM-2809 CSM-2819	CS Gel Dome Support with Foam Core (150mm high) CS Gel Dome Support with Foam Core (100mm high) CS Gel Dome Support with Foam Core (70mm high)	510mm x 150mm x 150mm 410mm x 100mm x 100mm 500mm x 150mm x 70mm
	CSM-2807	CS Gel Heel Supports (Pair)	180mm x 100mm x 75mm
	CSM-2805	CS Gel Supine Head Ring (Adult)	200mm x 45mm
	CSM-2810	CS Gel Supine Head Ring (Child)	140mm x 35mm
	CSM-2811	CS Gel Supine Head Ring (Infant)	90mm x 20mm
	CSM-2813	CS Gel Supine Head Ring with dip (Adult)	200mm x 70mm x 40mm
	CSM-2812	CS Lateral Gel Open Head Ring (Adult)	200mm x 45mm
	CSM-2814	CS Lateral Gel Open Head Ring (Infant)	90mm x 20mm
	CSM-2815	CS Flat Gel Pad (Head)	225mm x 500mm x 10mm
	CSM-2816	CS Flat Gel Pad (Torso)	990mm x 500mm x 10mm
	CSM-2817	CS Flat Gel Pad (Foot)	500mm x 500mm x 10mm



Gel Supports

See our disposable range



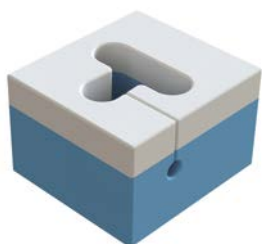
**CS Prone Plus
Face Cushion**

Order Code: CSM-2512



CS Prone One

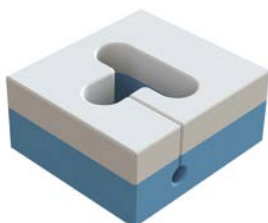
Order Code: CSM-2520



**CS Prone Face Blocks.
Available in 5" and 7"**

Order Code: 7" CSM-2535

Order Code: 5" CSM-2550



CS Arm Supports

Order Code: CSM-2575



CS Prone Leg Supports

Order Code: CSM-2590



CS Prone Chest Supports

Order Code: CSM-2621



**CS Prone Chest
& Pelvic Rolls**

Order Code: CSM-2902



CS Prone Face Mask

Order Code: CSM-2530



**CS Allen® Bow®
Compatible Covers**

Order Code: CSM-2608

For more information about any products in this catalogue, call 020 8050 4671
to speak to one of our friendly sales advisors.

CS Medical Limited
75 Park Lane, Croydon, Surrey CR9 1XS



Tel: 020 8050 4671



info@csmedical.co.uk



www.csmedical.co.uk

